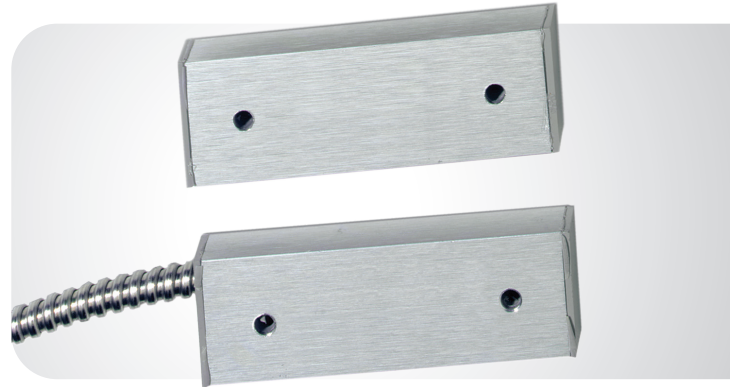


Industrial Wide Gap Surface Mount Magnetic Contacts

2500 Series



OVERVIEW

The 2500 Series is designed to be installed in commercial and industrial environments where a rugged sealed unit is required. It is ideal for metal doors, overhead doors, fences and gates. Each model features a high strength extruded aluminium housing and is completely encapsulated in our exclusive polyurethane potting compound. The 2500 series features wide gap distances and several models to meet almost every application need.

FEATURES

- Wide gap distance for decreased installation time
- Fewer false alarms
- Fewer service calls
- Five models including SPDT, DPDT and High Security
- Mounting brackets available

Industrial Wide Gap Surface Mount Magnetic Contacts

National Sales Enquiries
10 Ferntree Place
Notting Hill, Victoria 3168
Phone: 1300 361 479
Outside Australia: +61 3 9239 1200
www.fireandsecurityproducts.com.au

2500 Series

ARCHITECTURAL AND ENGINEERING SPECIFICATIONS

The contact shall be a hermetically sealed reed switch nominally 3" L x 1" H x 0.50" D with matching actuating magnet. Mounting holes shall be on 2" centres. Contact and magnets shall be in brushed anodized aluminium tube housing. Contact shall be sealed in our exclusive polyurethane potting compound. Right angle mounting bracket shall be furnished with contact, #1912.

2505A, 2507A

Each contact shall connect to three feet of flex stainless steel conduit.

2507AD (not ULC listed)

The contact shall contain two single-poled double throw reed contacts. Three feet of flex stainless steel conduit shall be permanently attached to the contact.

2507AH (not ULC listed)

The contact shall be a Form C (SPDT) reed contact biased with an Alnico VII magnet. Contact will be difficult to defeat with an external magnet. Three feet of flex stainless steel conduit shall be permanently attached to the contacts.

SPECIFICATIONS

Form A (2505A)

Voltage	100 V AC/DC max.
Current	0.5 A max.
Power	7.5 W max.
European Union Specification	48 V AC/DC max.

Form C (2507, 2507A, 2507AD, 2507AH)

Voltage	30 V AC/DC max.
Current	0.25 A max.
Power	3.0 W max.

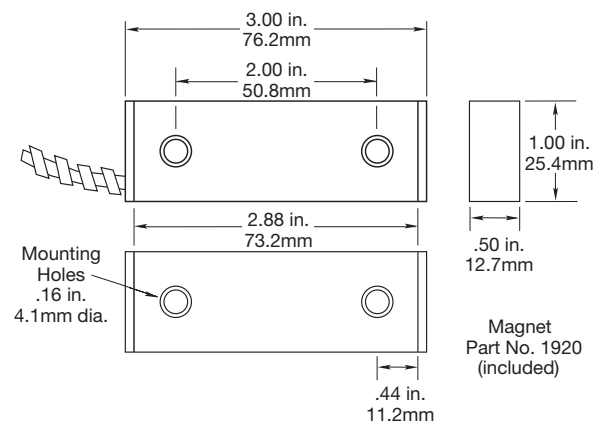
SPDT Lead Colours

Black	Common
White	Closed loop (N.O.)
Red	Open loop (N.C.)
Listing	C-UL-US, UL-634
Weight	380 g

ORDERING INFORMATION

2505A-L	Aluminum Housing Armoured Cable Contact, Closed Loop, Wide Gap, 3" Gap Size
2507AD-L	Aluminum Housing Armoured Cable Contact, DPDT, Wide Gap, 1 1/2" Gap Size, Double Pole-Double Throw
2507AH-L	Aluminum Housing Armoured Cable Contact, SPDT, Higher Security, Wide Gap, Biased for Higher Security Applications, 3/4" to 2 1/2" Gap Size, Single Pole-Double Throw
2507A-L	Aluminum Housing Armoured Cable Contact, SPDT, Wide Gap, 3" Gap Size, Single Pole-Double Throw
2507-L20	Aluminum Housing 2507 Magnetic Contact, SPDT, 20 ft. Jacketed Lead

DIMENSIONS



Specifications subject to change without notice.
Carrier Fire & Security Australia Pty Ltd.
© 2023 Carrier. All rights reserved. All trademarks are the property of their respective owners.

