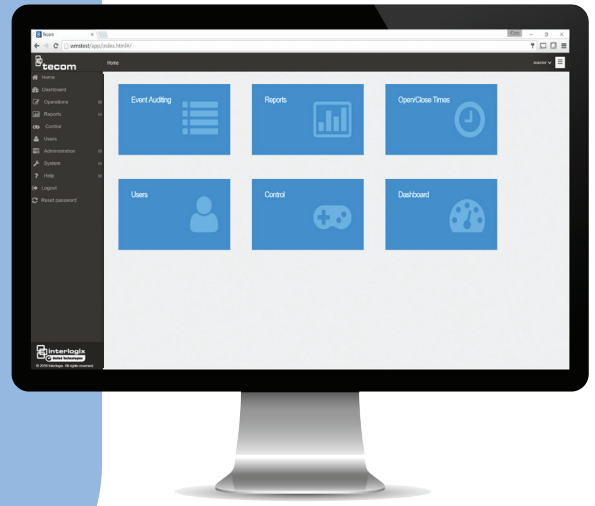


Web Management System



Powerful auditing capability to increase organisational efficiencies



WMS provides users with a detailed overview of their system via a web-based interface, giving access to important security data such as:

- Report on system-wide devices and users i.e. Challenger panels, inputs, outputs, users/ badges, and access levels
- Overview screen of system health (panels online/offline; monitoring station and database connection state, panel and devices firmware version display)

This enables operators to generate easy-to-use, pre-defined reports or identify site-specific reports as per customers' individual requirements.

The software runs on most modern browsers using a responsive design which adapts to varying screen sizes. This allows WMS to be used on a wide variety of devices, including desktop computers, laptops, tablets, phones, and more.

Tecom WMS is licensed on an annual renewal basis and your subscription entitles you to, among other benefits, any product updates, including major and minor releases, released during your subscription period.



Web Management System (WMS) for Tecom is an innovative and intuitive web-based reporting tool.

WMS collects data from your security system which enables you to generate user-friendly, flexible reports.

Quickly identifying activity that may require action, WMS gives you complete visibility of your site allowing you to respond more quickly and effectively than ever before.

Data at your fingertips.

Anytime, anywhere.

Tecom Web Management System generates a comprehensive range of reports which can be tailored to suit end-user requirements.

With just a few mouse clicks you can:

- Schedule reports which can be emailed at a convenient time
- Add, delete and modify users' access levels in the panel.
- Automatically enrol Challenger panels into WMS
- Remotely upgrade new firmware into panels and devices
- Command and control panels and devices, such as doors, relays, inputs, areas, etc.
- Export reports in PDF or CSV format

Report types

• **Audit compliance**

Displays number of alarms within a date range per site(s)

• **History**

Displays history for one or multiple panels for a duration of time

• **Not actioned**

Displays alarms that have not been acknowledged for a period of time

• **Out of hours access**

Easy analysis of individuals who have accessed premises outside of business hours

• **Late to open/ late to close**

Delivers a report indicating which sites were late to open/close

• **Event auditing**

List alarms with their comments and compliance status

• **Alarm deactivation**

Input alarms that have been reset within a specified time limit

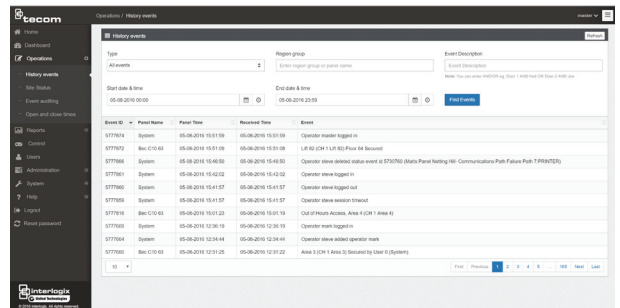
• **Status**

Displays alarms across panels that have not been restored

• **Panel information reports**

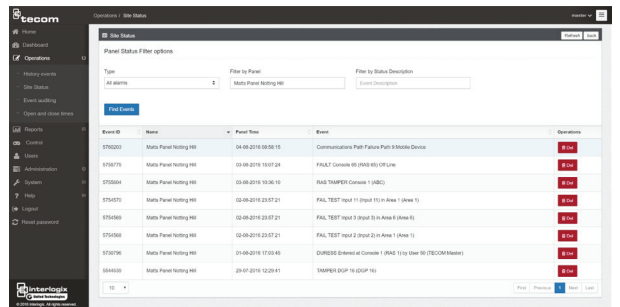
Reports that display users, devices and panel version across panels

Customisable report screens to display complete system data including:



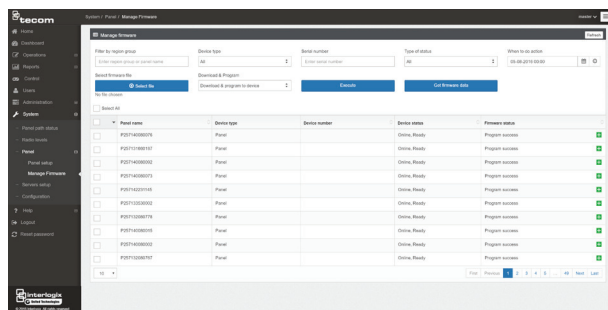
History Events

This displays history for all alarm events and panel events which can be segregated by regions, description, or specified time



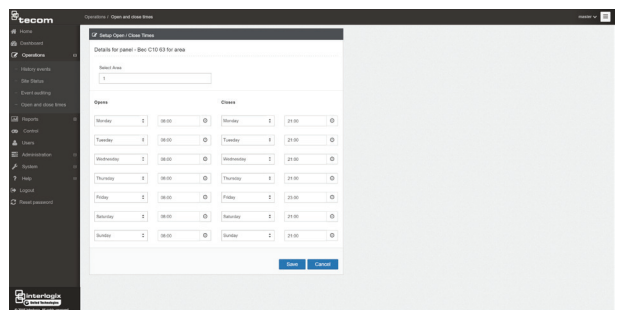
Site Status

Displays summary of site events, which can be filtered by different parameters such as input alarms, system alarms, relay status plus much more. Alarms can be acknowledged via this option.



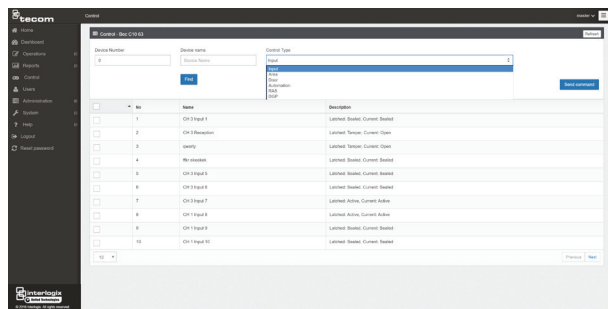
Firmware upgrade

Firmware updates can be completed remotely for panels, DGPs and RASs at a scheduled time and date



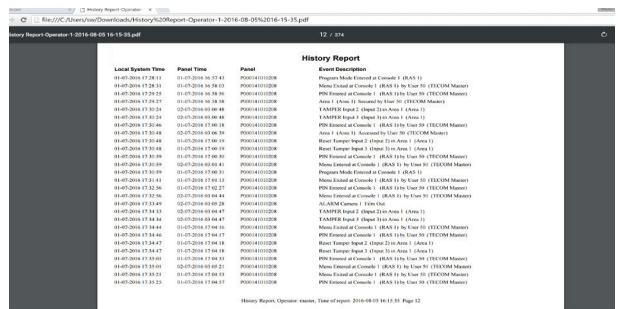
Operation hours

Provides a detailed report indicating the activity per site. Report contains information of the site manager and email address.



Control

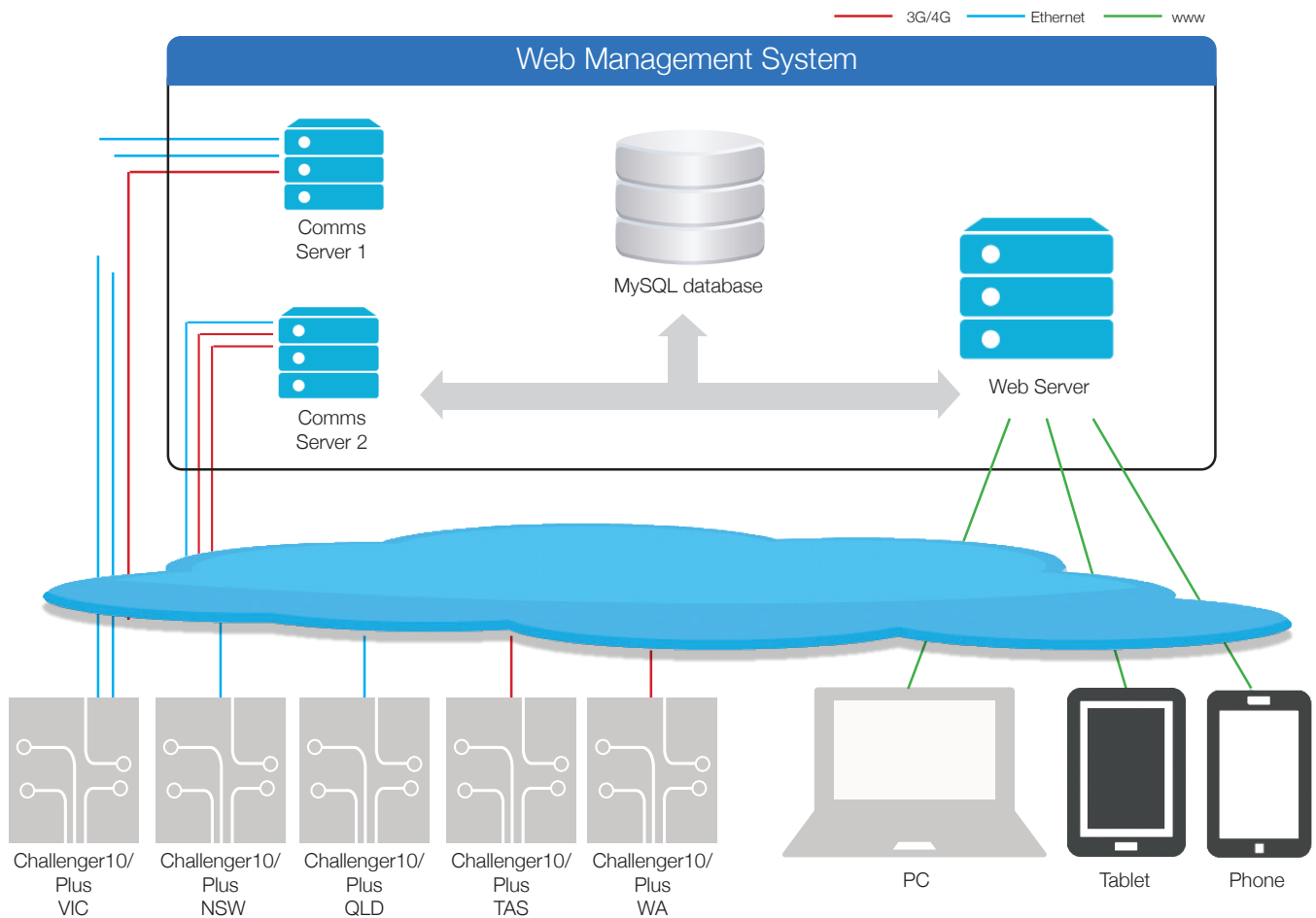
Allows the operator to perform control functions of the panel and its devices. For example, an operator can arm or disarm an area, or isolate and reset inputs.



Operator generated reports

Reports can be quickly generated and filtered by one of the standard options or non-standard options using Boolean logic, exported as a PDF or CSV file.

System Diagram



NOTE: The above system diagram is a representation of Web Management System connectivity and expansion capabilities. For configuration options and site capabilities of your individual requirements Aritech recommends that you work closely with our team to determine the best solution.



CTPlus Integration

With the new CTPlus integration, users can register their CTPlus software with a WMS server to provide automatic availability to program designated panels. Access to panels is governed by WMS permissions and can be limited to specific tasks dependent on the operator's assigned role.

Web Management System

Version 2.5 2024

2.5 2024 New Features:

- Multi-site user management
- Enhanced API calls supporting all WMS features
- Cyber security updates
- OS updates.

2.4 2023 New Features:

- Updated operating system: Ubuntu 22.04 LTS
- With WMS 2.4 the Linux OS has been upgraded to Ubuntu 22.04LTS. A currently supported and feature rich Linux deployment.
- Optional operating system: RHEL 8.6
- WMS 2.4 now has the ability to be deployed to RHEL 8.6 Linux environments.
- Due to the complex nature of deployment and ongoing maintenance/support, this option is not available as a standard deployment option. Please consult your local Aritech representative to find out more.

Bulk Panel Programming

Utilising the same CTPlus integration, users can now leverage the connection from CTPlus to the WMS database to modify the programming of multiple panels at once.

Please note: custom firmware available only from Aritech under license agreement is compatible with the Bulk Panel Programming feature.

Benefits:

- Reduced administration time
- Enhanced control of on-site programming via Operator permissions
- Enhanced reporting of audit trails
- Single database held in WMS reduces error as operators no longer have to upload or download when programming panels
- Fast deployment of new programming to an entire fleet of Tecom equipment when required

Multi-site User Management

Available from WMS 2.5 onwards, multi-site user management has been added to WMS.

This feature allows users to create Unified Access Groups and Controller Access Groups to effectively configure user access rights across multiple Tecom Challenger Plus control panels.

Benefits:

- Reduced administration time
- Enhanced user control
- Enhanced access rights management
- API calls available to support integrated systems

Web Management System

Version 2.5 2024

Specifications

Server Specification: Recommended		
Web/Application Server	Up to 100 Panels (Advanced Edition)	Up to 1000 Panels (Enterprise Edition)
CPU	4 Cores	8 Cores
RAM	4 GB	32 GB
Storage (drive)	250 GB SATA SSD	1 TB SATA SSD
Storage (total recommended)	480 GB or higher: 2 x 250 GB SSD in Raid1 configuration	2 TB or higher: 2 x 1 TB SSD in Raid1 configuration
Disk throughput	Minimum 1000 iops	Minimum 5000 iops
Physical server recommendation	Dell R250 or better	Dell R350 or better
Virtualisation	vmware ESXI recommended	vmware ESXI recommended
Storage		
Events storage	1 GB per million events	
WMS		
Challenger panel support		
Challenger10		Yes
ChallengerPlus (WMS 2.2 onwards)		Yes
Panel user update		Yes
IP Panel Connection		Yes
Panel time synchronisation		Yes
Firmware update utility		Yes
3G/4G Communication Module		Yes
OS Support		
Ubuntu		22.04 LTS
Optional paid upgrade		
RHEL		8.6
System Management		
Multi-client		Yes
Multi-tenancy		Yes
Advanced operator permissions		Yes
Alarm handling		
Predefined alarm responses		Yes
Reporting		
Automated reports		Yes
Custom history report		Yes
Time and attendance		Yes
Multiple formats (PDF, CSV)		Yes
Features		
Multi-monitor support		Yes
Scalability		
Clients		1,000
Maximum panels	1,000 (assumes 1 connected communications path per panel) per panel server	
Maximum active communications path	1,000 per panel server	
Events per second		200
Maximum database size		4 TB

The WMS API is also available for working with third party systems.
Please contact your local Aritech representative to find out more.

Web Management System (WMS)



About Aritech

Aritech provides leading security and life-safety solutions for both commercial and residential applications covering intrusion, video, transmission and access. Offering some of the most-trusted product names in the industry, and backed by ongoing partner services and support, Aritech helps customers secure and protect what matters most.

For more information visit www.firesecurityproducts.com.au.
Follow us on LinkedIn @Aritech Australia.

www.firesecurityproducts.com.au